



SUNNY BOY SMART ENERGY

SBSE3.6-50 / SBSE4.0-50 / SBSE5.0-50 / SBSE6.0-50

1

optional
Sunny Home Manager 2.0 / SMA Energy Meter
BATTERY

2

IP65

17.5 kg

90° ... 80°

+60 °C

-25 °C

3

mm

2

17.5 kg

3

4

RCD TypA ≥ 30 mA

1 **2** **3**

4 **5** **6**

2.5 to 10 mm² PE N L

Temp.: 90 °C

Ø 10 to 25 mm

18 mm

4

7 **8** **9** **10**

11 **12** **13**

14 optional

crimp

Tx25 2,5 Nm

	SBSE3.6-50	SBSE4.0-50	SBSE5.0-50	SBSE6.0-50
P _{AC} (@ 230 V, 50 Hz)	3.6 kW	4.0 kW	5.0 kW	6.0 kW
S (@ cos φ = 1)	3.6 kVA	4.0 kVA	5.0 kVA	6.0 kVA

4

	SBSE3.6-50	SBSE4.0-50	SBSE5.0-50	SBSE6.0-50
V _{AC,r}	230 V / 240 V			
V _{AC,range}	184 V to 253 V / 192 V to 264 V			
I _{AC,max} (@ 230 V)	15.7 A	17.4 A	21.8 A	26.1 A
I _{AC,max} (@ 240 V)	15.0 A	16.7 A	20.9 A	25 A
f _{AC}	50 Hz / 60 Hz			
cos φ	0.8 overexcited to 0.8 underexcited			

5

optional

2.5 to 4 mm²

2.5 mm²

Temp.: ≥90 °C

Ø 10 to 14 mm

10 to 12 mm

PE N

1 **2**

3 **4**

PE

PZ2 >2,5 Nm

5

optional

0.75 to 1.5 mm²

Temp.: ≥90 °C

6 mm

4

SPS

5 **6** **7**

8 **9** **10**

< 30 V

6

SUNNY BOY SMART ENERGY

ROUTER

LAN1

optional

SUNNY HOME MANAGER 2.0 / SMA ENERGY METER

LAN2

Cable type: 100BaseTx
Min. CAT5e, RJ45 ends
Shielded
UV resist for outdoor

max. 50 m

LAN2 LAN1

1 **2** **3** **4** **5**

click

7

optional

BATTERY

SUNNY BOY SMART ENERGY

BAT_EN CAN_L CAN_H EN_GND

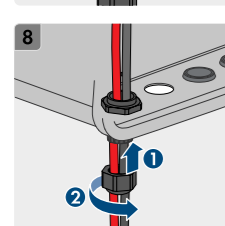
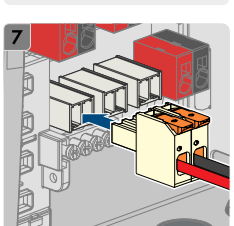
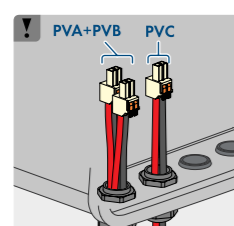
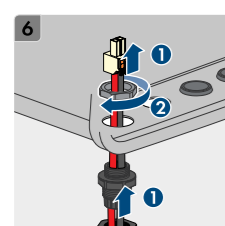
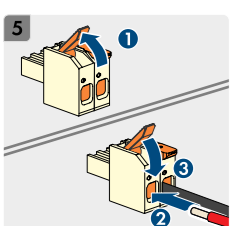
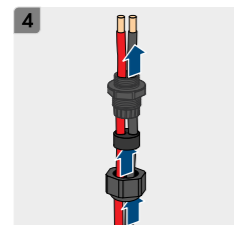
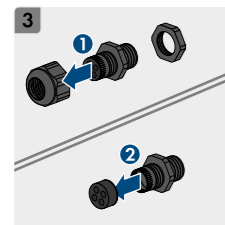
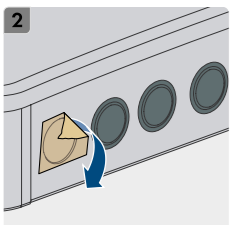
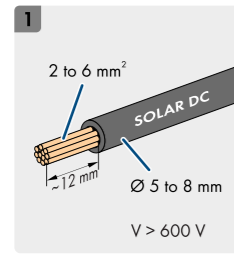
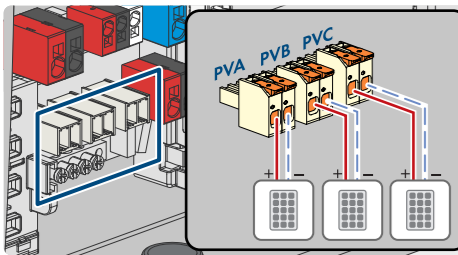
Cable type: 100BaseTx
Min. CAT5e, RJ45 ends
Shielded
UV resist for outdoor

max. 50 m

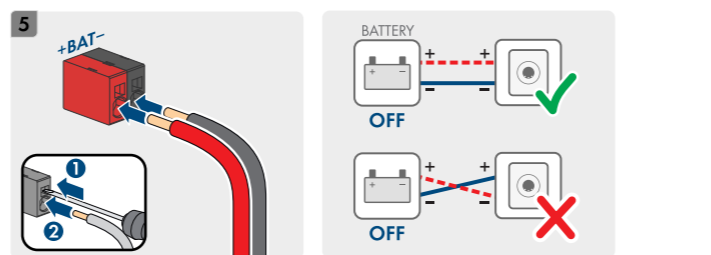
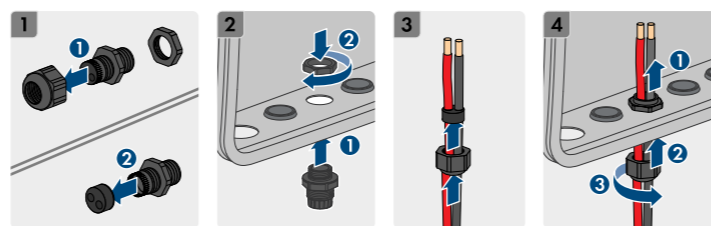
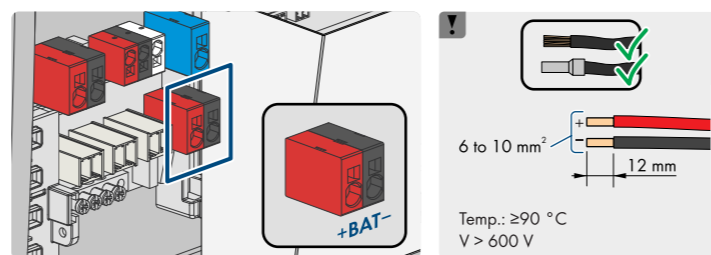
1 **2** **3** **4**

4 **5**

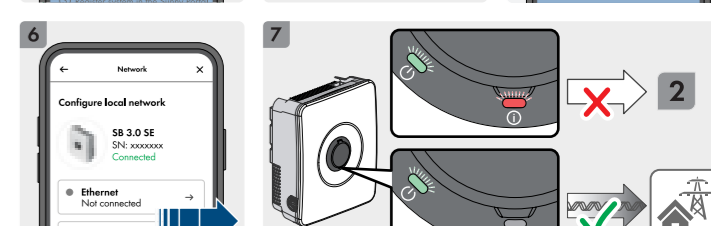
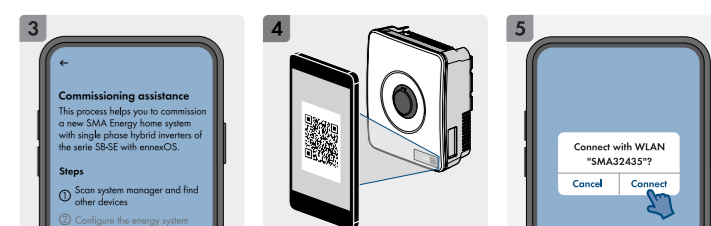
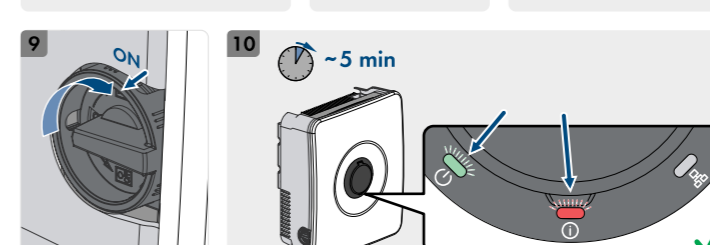
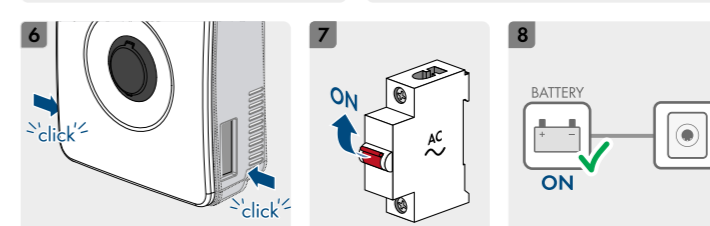
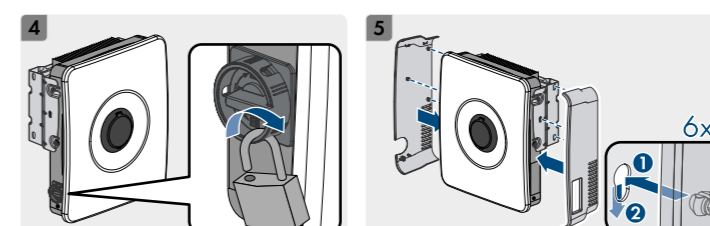
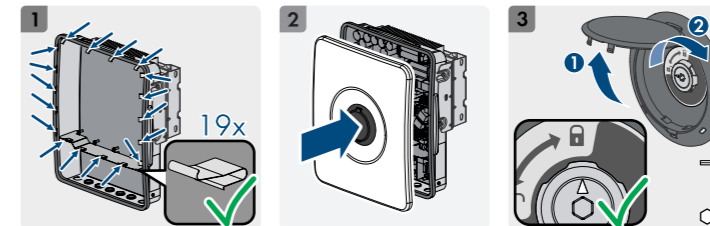
click



	SBSE3.6 -50	SBSE4.0 -50	SBSE5.0 -50	SBSE6.0 -50
Max. generator power	7200 Wp	8000 Wp	10000 Wp	12000 Wp
$V_{DC, max}$	600 V			
$V_{DC, MFP}$	60 V to 480 V			
$I_{DC, max}$ usable input A / B / C	15 A			
$I_{SC PV max}$ input A / B / C	30 A			
$I_{SC PV max}$ all inputs	60 A			



Type	Li-ion battery
$V_{DC, max}$	500 V
$V_{DC, min}$	90 V
$I_{DC, max}$	30 A



Topology	no galvanic isolation
Overtoltage category in accordance with IEC 60664-1	II (DC), III (AC)
Protection class in accordance with IEC 61140	I
All-pole sensitive residual-current monitoring unit	integrated
Maximum permissible value for relative humidity, condensing	100 %
Extended humidity range according to IEC 60721-3-4	0 % to 100 %
Pollution degree inside the enclosure	2
Pollution degree outside the enclosure	3



<https://go.sma.de/service>