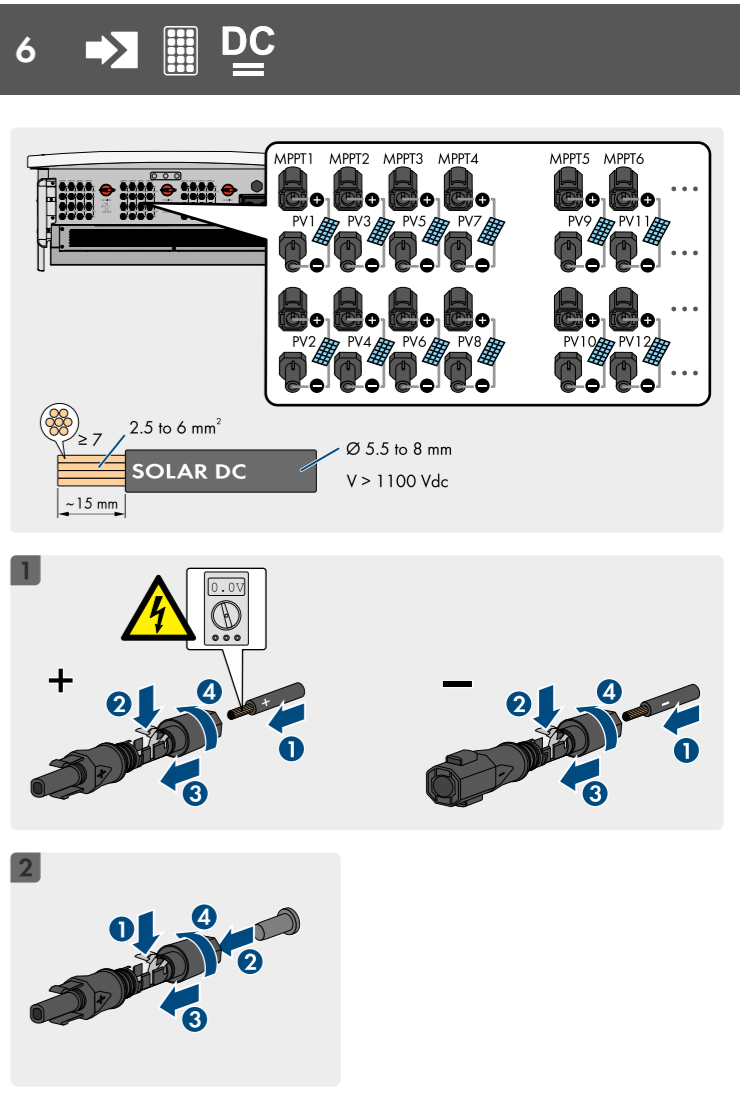
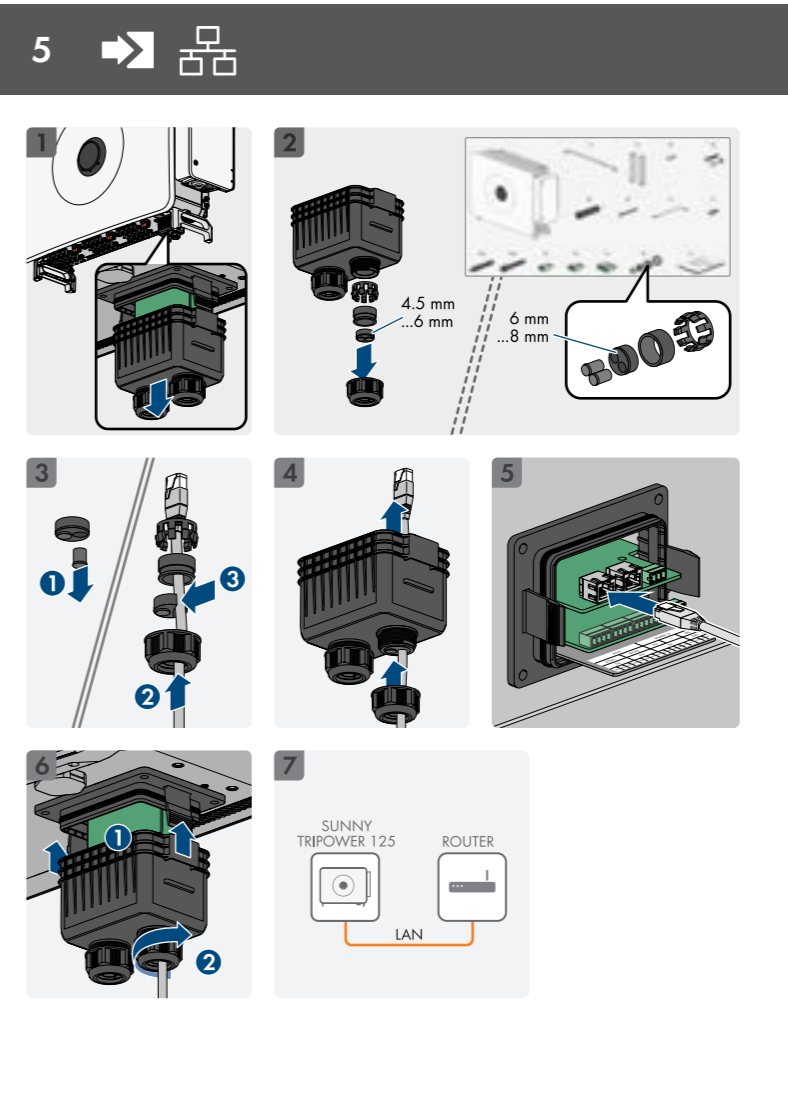
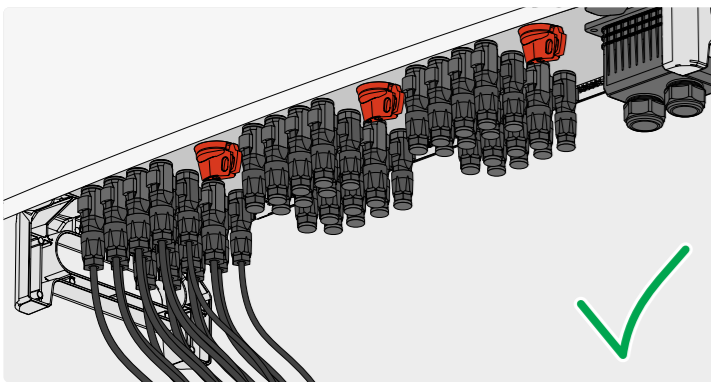
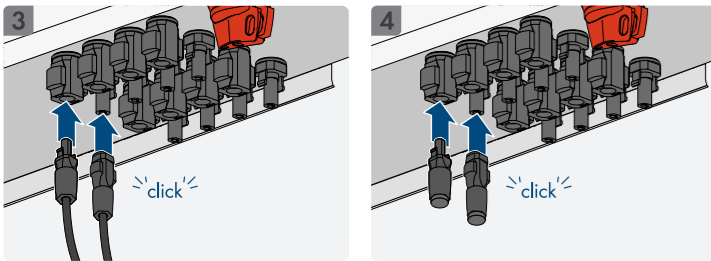


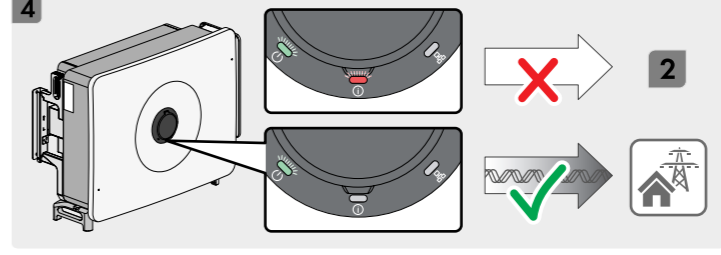
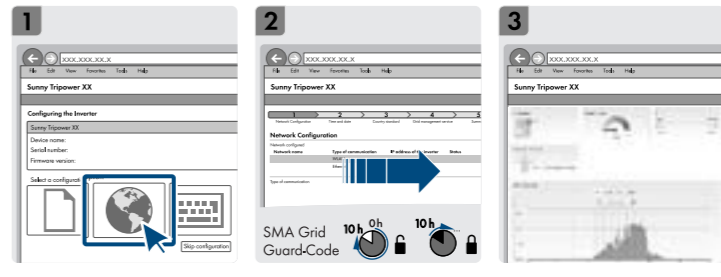
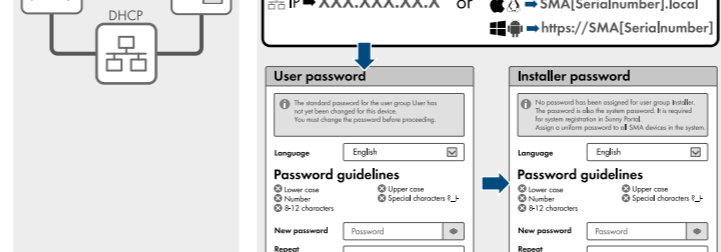
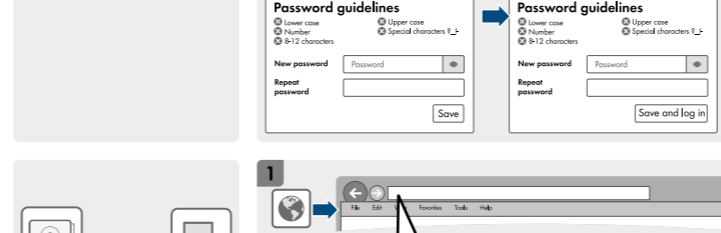
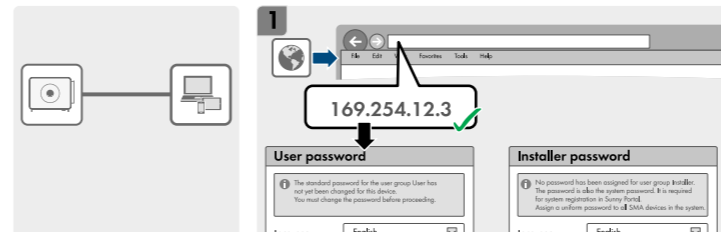
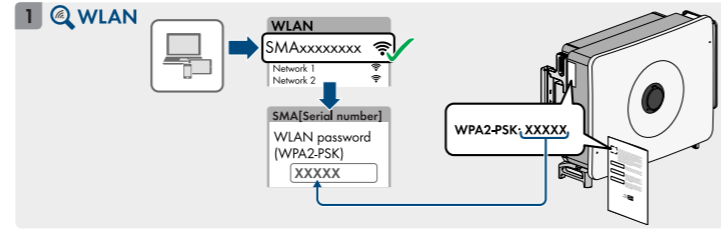
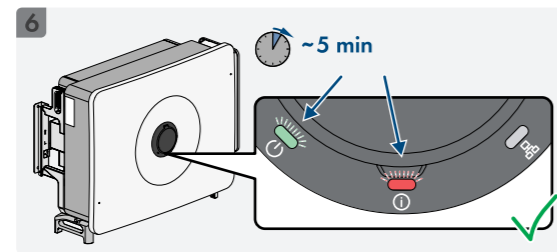
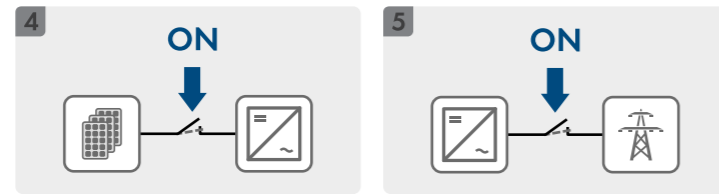
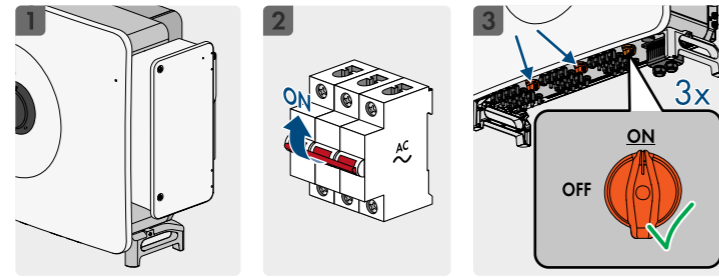
4

AC	STP 125-70
P_{AC} (@ 230 V, 50 Hz)	125 kW
S (@ $\cos \varphi = 1$)	125 kVA
$V_{AC,r}$	400 V
$V_{AC,range}$	320 V to 480 V
I_{AC}	181,1 A
$I_{AC,max}$	181,1 A
f_{AC}	50 Hz / 60 Hz
$\cos \varphi$	0.8 overexcited to 0.8 underexcited





DC	STP 125-70
Max. generator power	187500 Wp STC
$V_{DC, max}$	1100 V
$V_{DC, MPP @35^{\circ}C}$	450 V to 850 V
$V_{DC, MPP @40^{\circ}C}$	550 V to 800 V
$I_{SC PV max, MPP}$	30 A / 40 A



Topology	without transformers
Overvoltage category in accordance with IEC 60664-1	II (DC), III (AC)
Protection class in accordance with IEC 61140	I
All-pole sensitive residual-current monitoring unit	integrated
Maximum permissible value for relative humidity, condensing	100%
Extended humidity range according to IEC 60721-3-4	0% to 100%
Pollution degree inside the enclosure	2
Pollution degree outside the enclosure	3
Demand Response Mode per AS/NZ 4777.2	DRMO
Power control/Demand Response (DRED)	Communication via Modbus



<https://go.sma.de/service>